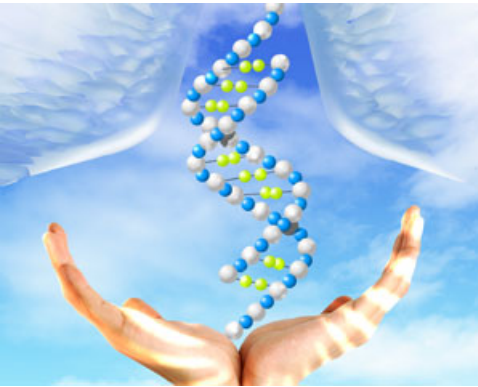


## FOUR-PART LECTURE ON SCIENCE AND THEOLOGY



Pittsburgh Theological Seminary will present a four-part lecture series on “Science,

Religion, and Theology” Mon., March 14, 21, 28, and April 4 from 10:00 a.m.-12:15 p.m. The Rev. Dr. Charles B. Partee, P.C. Rossin Professor Emeritus at the Seminary, and Jonathan F. Partee, research faculty at Penn State University Electro-Optics Center, Freeport, Pa. will lead the course.

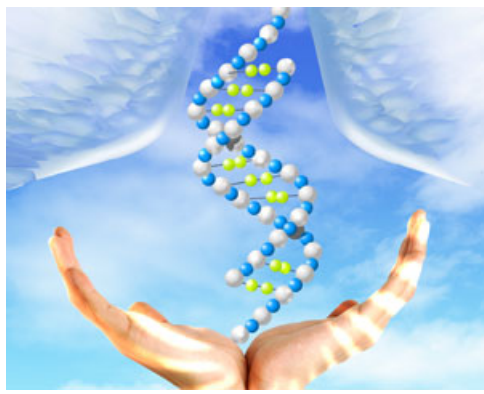
This father-son exploration of important issues in science and religion will be led by Jonathan, who holds a Ph.D. in physics, and his father, Charles, who has the same degree in theology. This dynamic duo will take hold of the rope at opposite ends. Thus, the ensuing tug of war (or perhaps peace) is designed to clarify important issues on which close relations can agree and/or disagree...without spoiling the family picnic.

The first section deals with the relationship between science and religion in the classical period. In the second section participants will notice how this relationship starts to diverge during the Renaissance with the rise of modern science. The third section we will consider the rise of modern paganism in the Enlightenment. In the final section participants will look at the modern era, in which the development of physics and the development of Old Testament scholarship proceed apace.

Registration fee for this course is \$80 and 0.8 Continuing Education Units are available upon completion. Contact the Office of Continuing Education with questions at 412-924-1345 or [ConEd@pts.edu](mailto:ConEd@pts.edu). Learn more and register [online](#).

Pittsburgh Theological Seminary is a graduate professional institution of the Presbyterian Church (U.S.A). Founded in 1794, the Seminary is located in Pittsburgh, Pa. and approximately 320 students are enrolled yearly in the degree programs. The Seminary prepares leaders who proclaim with great joy God’s message of good news in both word and deed. PTS is rooted in the Reformed history of faithfulness to Scripture and commitment to the Gospel of Jesus Christ.

###



Pittsburgh Theological Seminary will present a four-part lecture series on “Science, Religion,

and Theology” Mon., March 14, 21, 28, and April 4 from 10:00 a.m.-12:15 p.m. The Rev. Dr. Charles B. Partee, P.C. Rossin Professor Emeritus at the Seminary, and Jonathan F. Partee, research faculty at Penn State University Electro-Optics Center, Freeport, Pa. will lead the course.

This father-son exploration of important issues in science and religion will be led by Jonathan, who holds a Ph.D. in physics, and his father, Charles, who has the same degree in theology. This dynamic duo will take hold of the rope at opposite ends. Thus, the ensuing tug of war (or perhaps peace) is designed to clarify important issues on which close relations can agree and/or disagree...without spoiling the family picnic.

The first section deals with the relationship between science and religion in the classical period. In the second section participants will notice how this relationship starts to diverge during the Renaissance with the rise of modern science. The third section we will consider the rise of modern paganism in the Enlightenment. In the final section participants will look at the modern era, in which the development of physics and the development of Old Testament scholarship proceed apace.

Registration fee for this course is \$80 and 0.8 Continuing Education Units are available upon completion. Contact the Office of Continuing Education with questions at 412-924-1345 or [Click to view e-mail](#). Learn more and register **online**.

Pittsburgh Theological Seminary is a graduate professional institution of the Presbyterian Church (U.S.A). Founded in 1794, the Seminary is located in Pittsburgh, Pa. and approximately 320 students are enrolled yearly in the degree programs. The Seminary prepares leaders who proclaim with great joy God’s message of good news in both word and deed. PTS is rooted in the Reformed history of faithfulness to Scripture and commitment to the Gospel of Jesus Christ.

###

Pittsburgh Theological Seminary  
616 North Highland Avenue  
Pittsburgh, PA 15206  
Phone: 412-362-5610



**FIND YOUR PROGRAM**

**REQUEST INFO**

**APPLY ONLINE**

**VISIT THE CAMPUS**

**News & Events**[Contact](#)[Directions](#)[Employment](#) **Save Page As PDF**

[Privacy Policy](#)

[COVID-19](#)

[Accessibility](#)

[Anti-Discrimination](#)

[Title IX And Anti-Harassment](#)